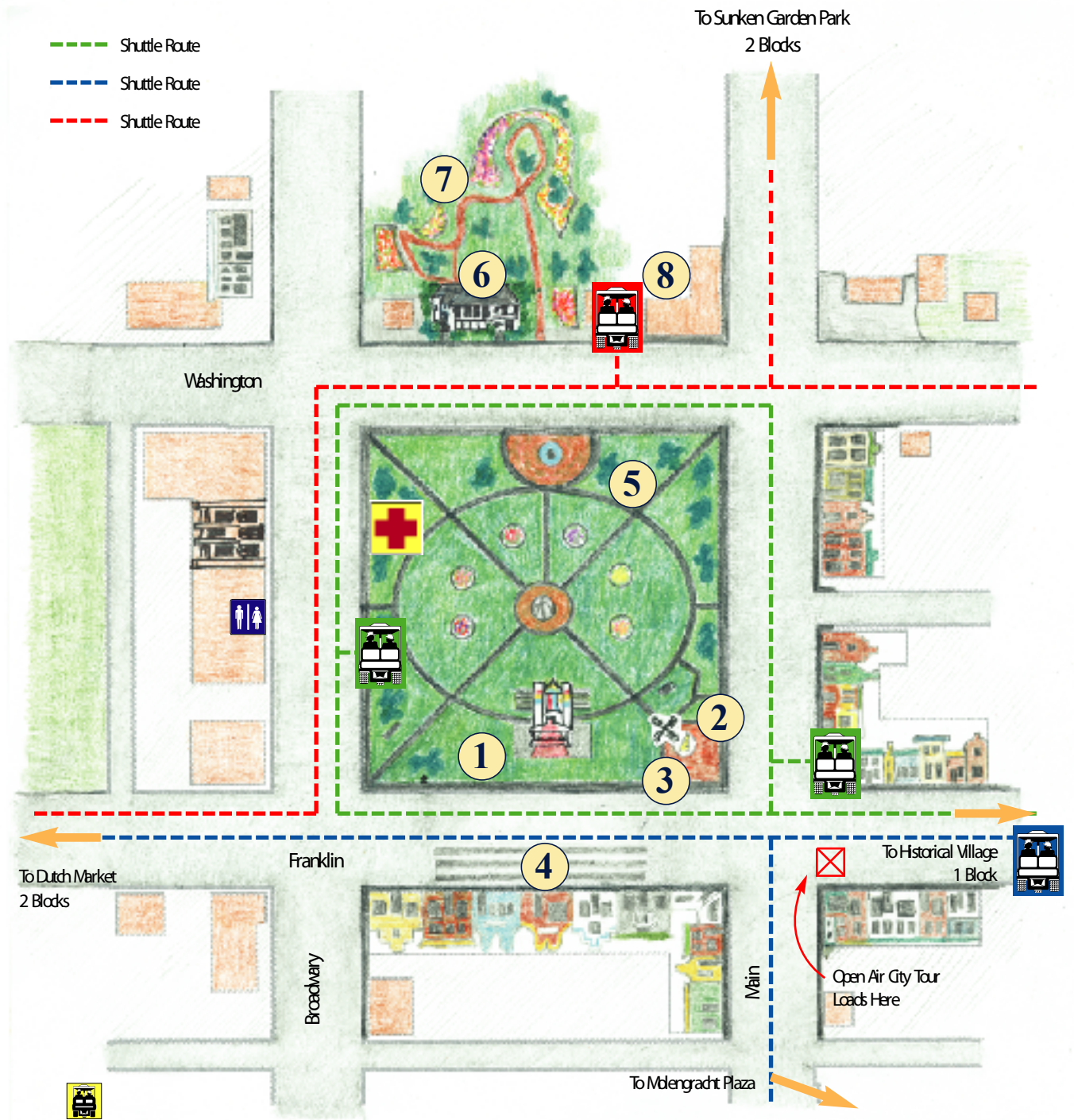


- 1 Tulip Toren. Designed by a Pella architect, inspired by the biblical description of King Solomon's temple. The Netherlands flag colors flutter above two soaring 65-foot pylons.
- 2 Ticket Booth. Tickets to Grandstand events available at this booth during the festival. (Other tickets available at attractions.)
- 3 Information Windmill. Your questions answered!
- 4 Grandstand Seating. The best view of the shows, street events, and parades. Afternoons: Reserved Seating \$5, Park Seating \$4. Evenings: Reserved Seating: \$4, General Admission: \$2.
- 5 Kids' Corner. Games, crafts, and activities for kids of all ages.
- 6 Scholte House. Original home of Pella's founder, Dominie H. P. Scholte, built because he'd promised his wife Mareah a house as elegant as their previous Netherlands home. Many preserved original furnishings. Open 9 A.M. to 6 P.M. Tour takes 45 minutes. Adults \$5; Children under 10, \$1.
- 7 Scholte Gardens. Feature brick walks, life-size sculptures, and 28,000 tulips.
- 8 Antique Auto Display

-  Golf Cart Shuttle Stops
-  Restrooms
-  Third Hands Hospitality Tent: wheel chairs, first aid, hospitality



Getting A round

Golf cart shuttles are available to Tulip Time's main attractions. Shuttles run from 10 A.M. to 2 P.M. and 4 to 7 P.M. Look for yellow signs. The cost is \$1 each time you board. Daily passes are \$3, and 3-day passes are \$8. Passes can be purchased after April 1 at the Pella Historical Village Business Office and at boarding locations during Tulip Time.